

SET เขียวๆ จะไวใจได้ก้า???

ขอเชิญลูกทรีนี่ดีร่วมสัมมนา



ไวใจได้ก้า

โดย คุณกมลชัย พลอินทวงษ์ ผู้ช่วยกรรมการผู้จัดการ บล.ทรีนี่ดี

วันอังคารที่ 9 มกราคม 2561

เวลา 13.15 น. - 14.30 น.

ณ ห้องสัมมนา ชั้น 25 บล. ทรีนี่ดี สำนักงานใหญ่



www.trinitythai.com



TrinitySecuritiesGroup



Trinity Securities Group



สำรองที่นั่ง

ติดต่อคุณวิลาวรรณ ส่วนธุรการหลักทรัพย์ โทร. 9122



RETURN OF หุ้นจตุรมิตร

(GPSC = 24.5718
 High = 5.9783
 Low = 5.0036
 Open = 5.3884
 Last = 5.4801
 1/ 5/18

(GPSC+BGRIM+BCPG+GULF) SET



%Chg



PTT AT LEAST 100 หุ้น (OUR COMMITMENT)

PTT PCL (PTT)

%Chg

High = 11.2676
Low = 8.9202
Open = 10.7981
Last = 9.8592
Level 426 = 0.0000

Vol = 87860.

Volume

200000
87860
0

Jun 6/19 6/26 7/3 7/10 7/17 7/24 8/1 Aug 8/14 8/21 9/1 Sep 9/11 9/18 9/25 10/2 Oct 10/9 10/16 10/23 11/1 Nov 11/13 11/20 12/1 Dec 12/11 12/18 12/25 Jan Day

FIBO TP OF DJIA

High = 25299.79
 Low = 24741.70
 Open = 24809.35
 Last = 25295.87
 0.00% = 6440.08
 100.00% = 14279.96
 161.80% = 19125.01
 261.80% = 26964.88
 1/18

Dow Jones Indus Avg - US,D15 (_DJIA)



RSI 14 = 88.58

Relative Strength Index



%K 14 M3 = 98.60
 %D M3 = 97.70

Modified Stochastic



1990 1991 1992 1993 1994 1995 1996 1997 1998 1999 2000 2001 2002 2003 2004 2005 2006 2007 2008 2009 2010 2011 2012 2013 2014 2015 2016 2017

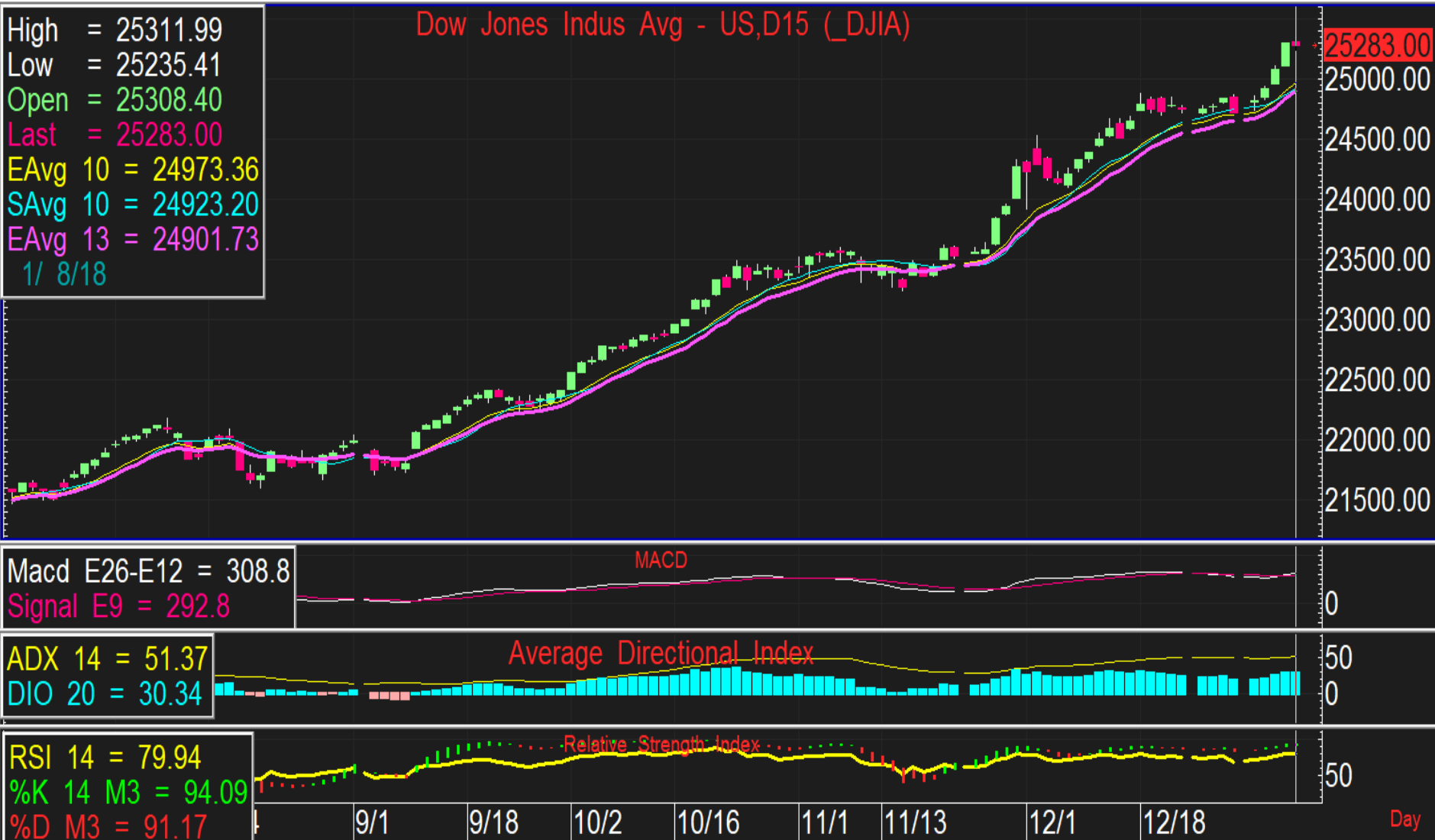
Month



r-R of DJIA at 25,348-25,611



Short term Downside of DJIA by MAV



DXYO (เดา) MAYBE W SHAPE??(LOW=91)



Downside From HM pattern



US BOND YIELD 10Y (r=2.51% R=2.53%)

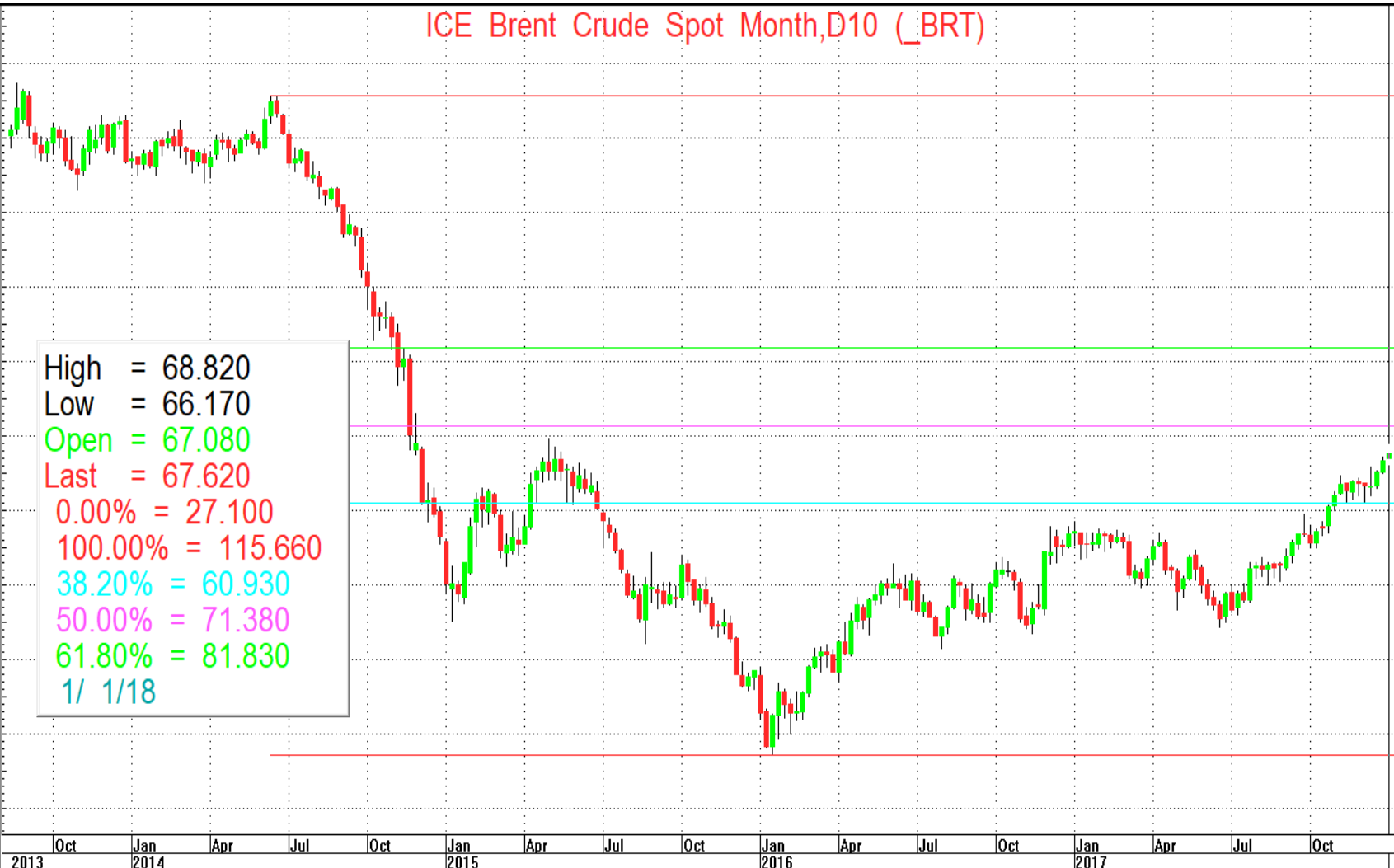


FIBO R = 70+/-1

ICE Brent Crude Spot Month,D10 (_BRT)

High = 68.820
 Low = 66.170
 Open = 67.080
 Last = 67.620
 0.00% = 27.100
 100.00% = 115.660
 38.20% = 60.930
 50.00% = 71.380
 61.80% = 81.830
 1/ 1/18

125.000
 120.000
 115.660
 110.000
 105.000
 100.000
 95.000
 90.000
 85.000
 81.830
 75.000
 71.380
 67.620
 65.000
 60.930
 55.000
 50.000
 45.000
 40.000
 35.000
 30.000
 27.100
 25.000
 20.000



2013 Oct Jan 2014 Apr Jul Oct Jan 2015 Apr Jul Oct Jan 2016 Apr Jul Oct Jan 2017 Apr Jul Oct Week



Uptrend channel in BRT



R FROM TREND at 1,352 & 1375 \$

Gold Spot Price,RT (IQXGL)

High = 1325.82
Low = 1302.23
Open = 1302.63
Last = 1318.88
1 = 1352.36
= 1375.12
1/ 1/18



FIBO SUPPORT IN GOLD (1,309-1,292)



DOLLAR BAHT SUPPORT (LOW=32.08)



R OF SET BY FIBO EXTENTION



S FROM FAN

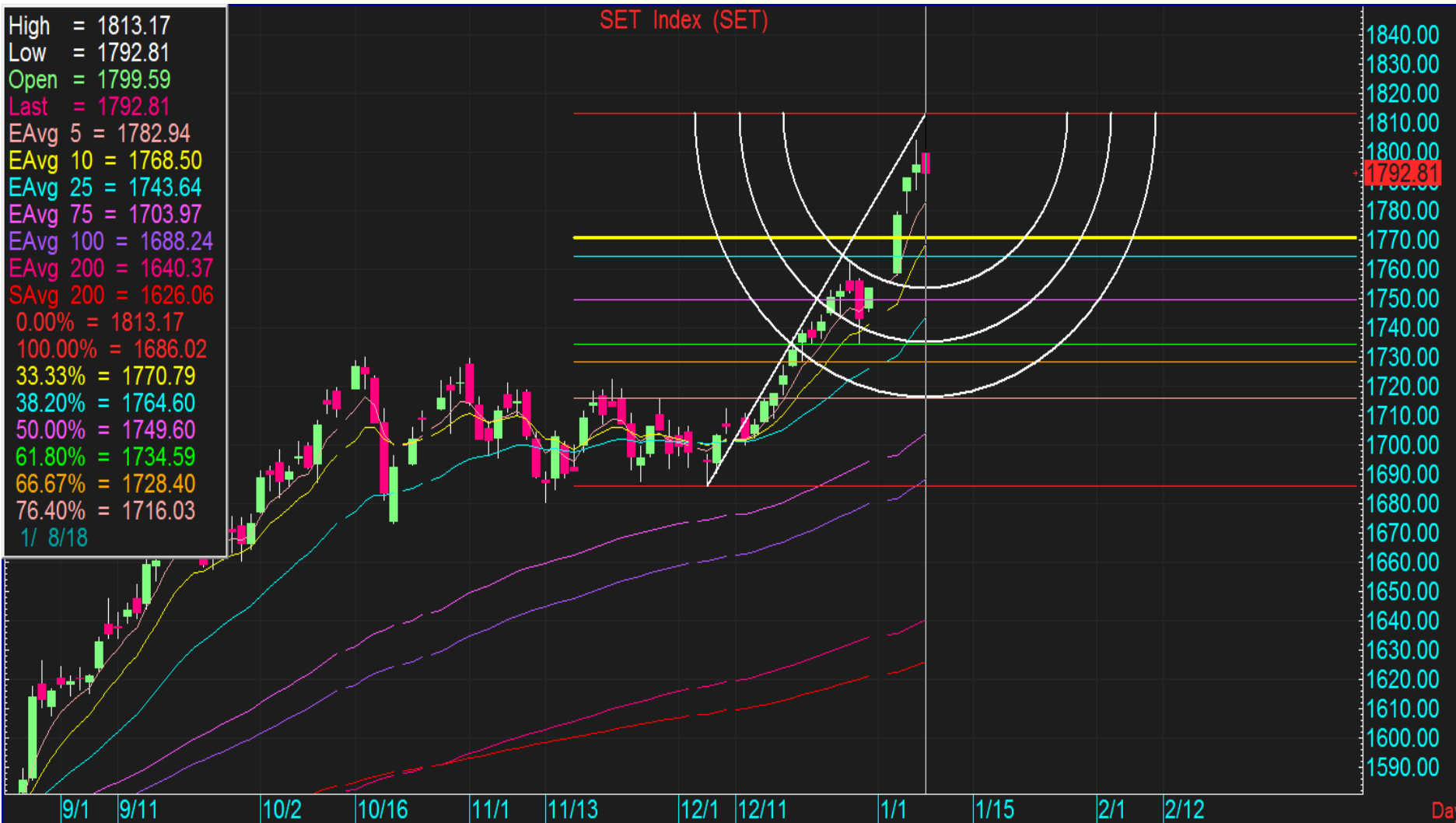
SET Index (SET)

High = 1798.69
 Low = 1784.75
 Open = 1795.89
 Last = 1795.69
 EAvg 5 = 1787.19
 SAvg 5 = 1790.70
 EAvg 10 = 1773.44
 SAvg 10 = 1770.61
 EAvg 25 = 1747.64
 SAvg 25 = 1736.80
 38.20% = 1768.02
 50.00% = 1752.36
 61.80% = 1736.70
 1/ 9/18

1820.00
 1800.00
 1795.69
 1780.00
 1760.00
 1740.00
 1720.00
 1700.00
 1680.00
 1660.00
 1640.00
 1620.00
 1600.00
 1580.00
 1560.00
 1540.00



ALL ABOUT FIBO SUPPORT



Upside By Channel AT1,858



DATA

2016 INDO+1,259 // THAI+2,240 /// PHILIP +83

Unit : US\$ mn

	As at	Day	WTD Net	MTD Net	YTD Net
Indonesia	12-Dec	-49.2	-71.4	-254.9	-2,896.3
Philippines	12-Dec	-0.0	-0.2	-37.2	1,002.5
Thailand	9-Dec	-21.7	-21.7	-251.2	-772.5

Source: Bloomberg

DATA UPDATED

Unit : US\$ mn

	As at	Day	WTD Net	MTD Net	YTD Net
Indonesia	8-Jan-18	20.2	20.2	104.8	104.8
Philippines	8-Jan-18	24.1	24.2	38.8	38.8
Thailand	8-Jan-18	-103.5	-103.5	-116.5	-116.5

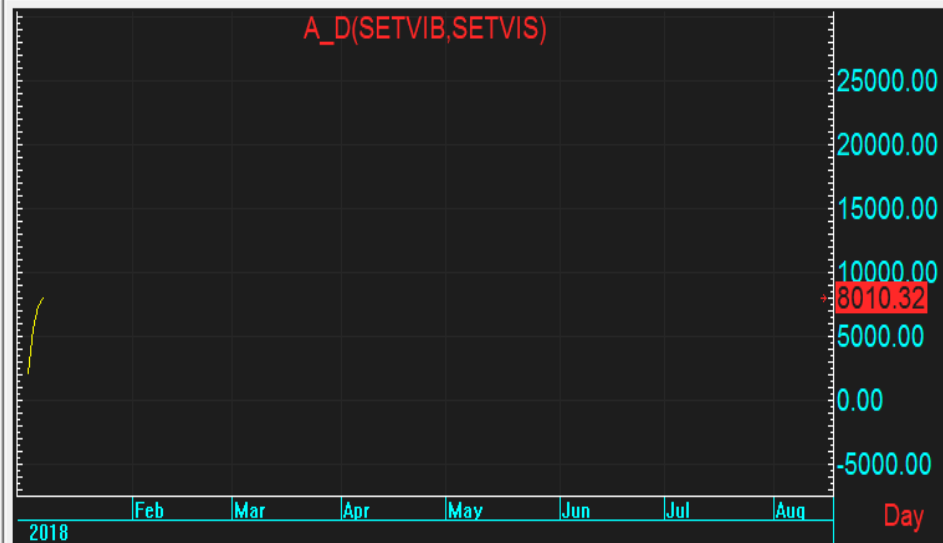
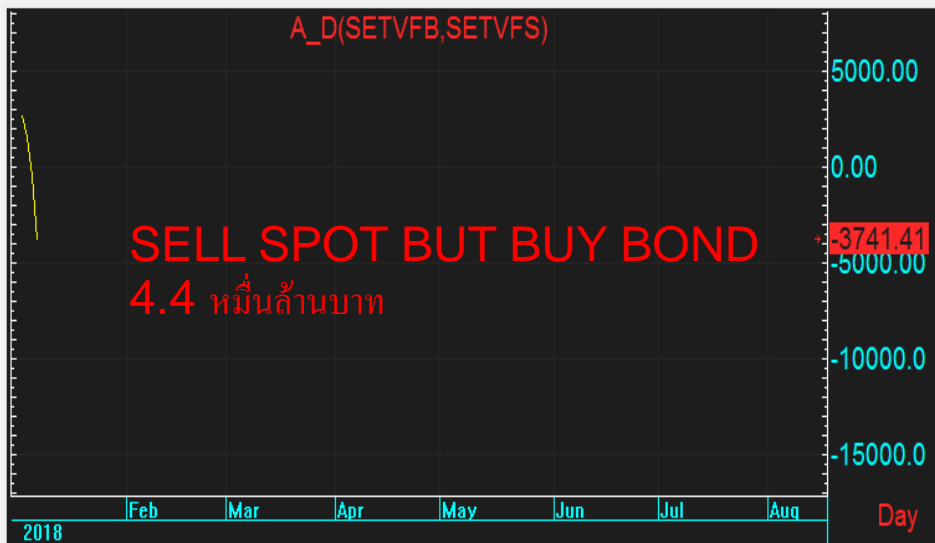
Source: Bloomberg

Unit : US\$ mn

	As at	Day	WTD Net	MTD Net	YTD Net
Indonesia	29-Dec-17	24.9	-2.1	-318.7	-2,960.0
Philippines	29-Dec-17	35.9	67.9	55.4	1,095.0
Thailand	29-Dec-17	71.9	52.7	-274.3	-795.6

Source: Bloomberg

DATA (MTD) IN JAN



DATA IN 2017



DATA (2016- 08JAN 2018)



ตามจ้าว

A_D(SETVIB,SETVIS) SET



POSITIVE SIGN OF DOW THEORY



INTER-MKT METHOD IMPLY R FROM SET IN DOLLAR TERM AT 1,817+/-



BAND SWING OF SET (1,744-1,823)

High = 1798.69
Low = 1784.75
Open = 1795.89
Last = 1795.69
Avg S10 = 1770.61
Top 300.0% = 1823.73
Btm 150.0% = 1744.05
1/ 9/18

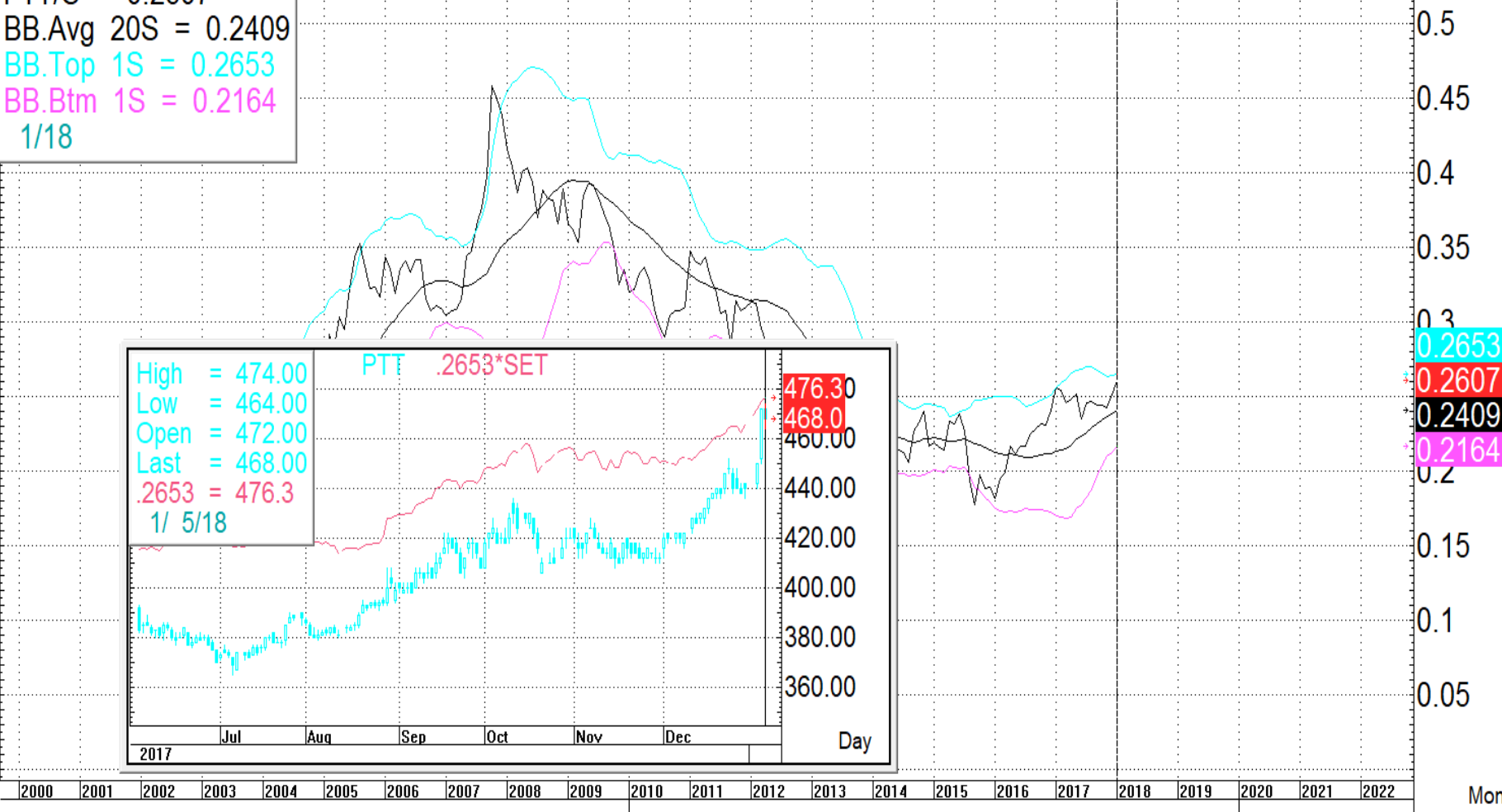
SET Index (SET)



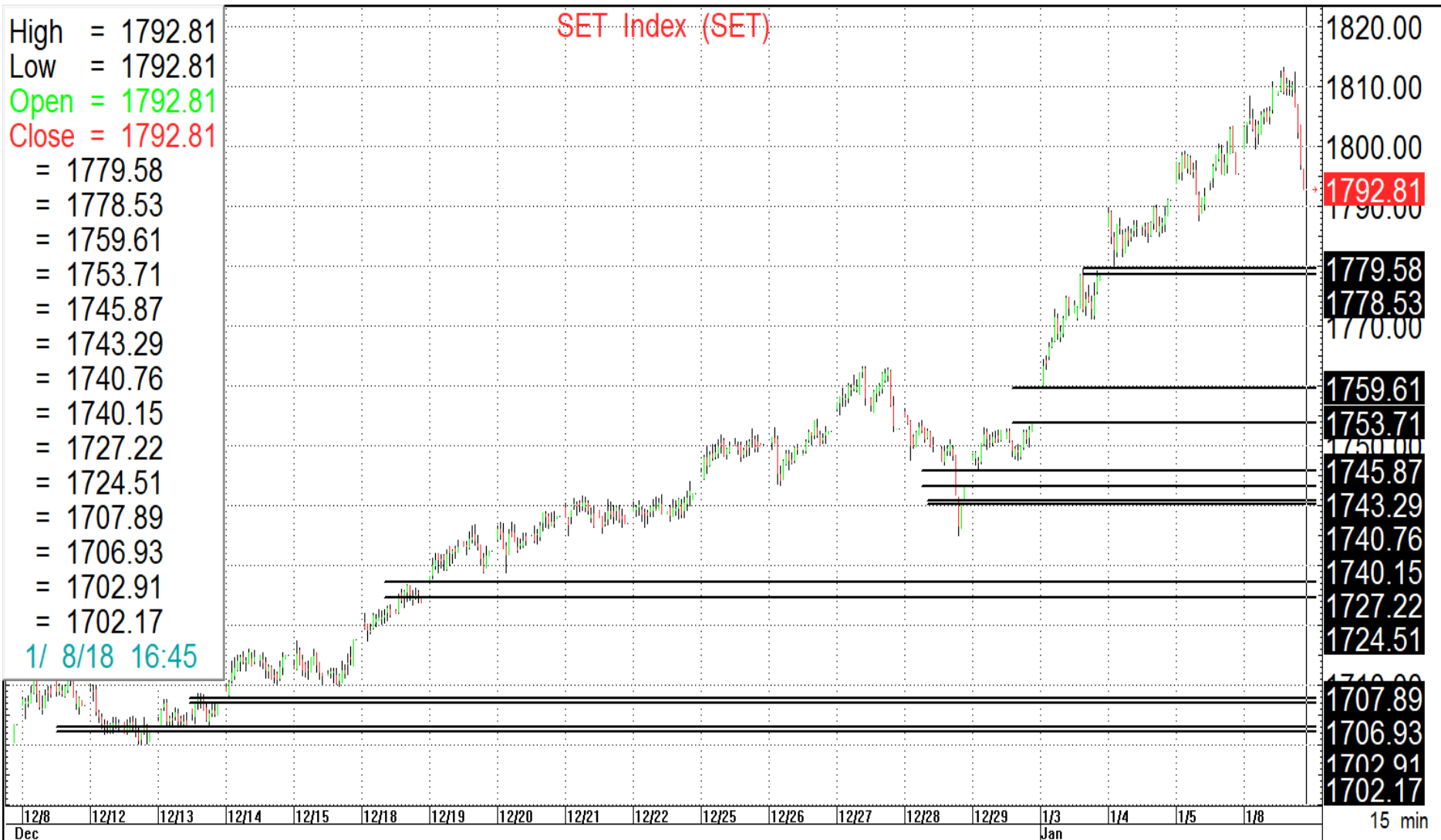
COMPARE PTT VS SET IMPLY R AT 476

PTT/S = 0.2607
 BB.Avg 20S = 0.2409
 BB.Top 1S = 0.2653
 BB.Btm 1S = 0.2164
 1/18

PTT/SET



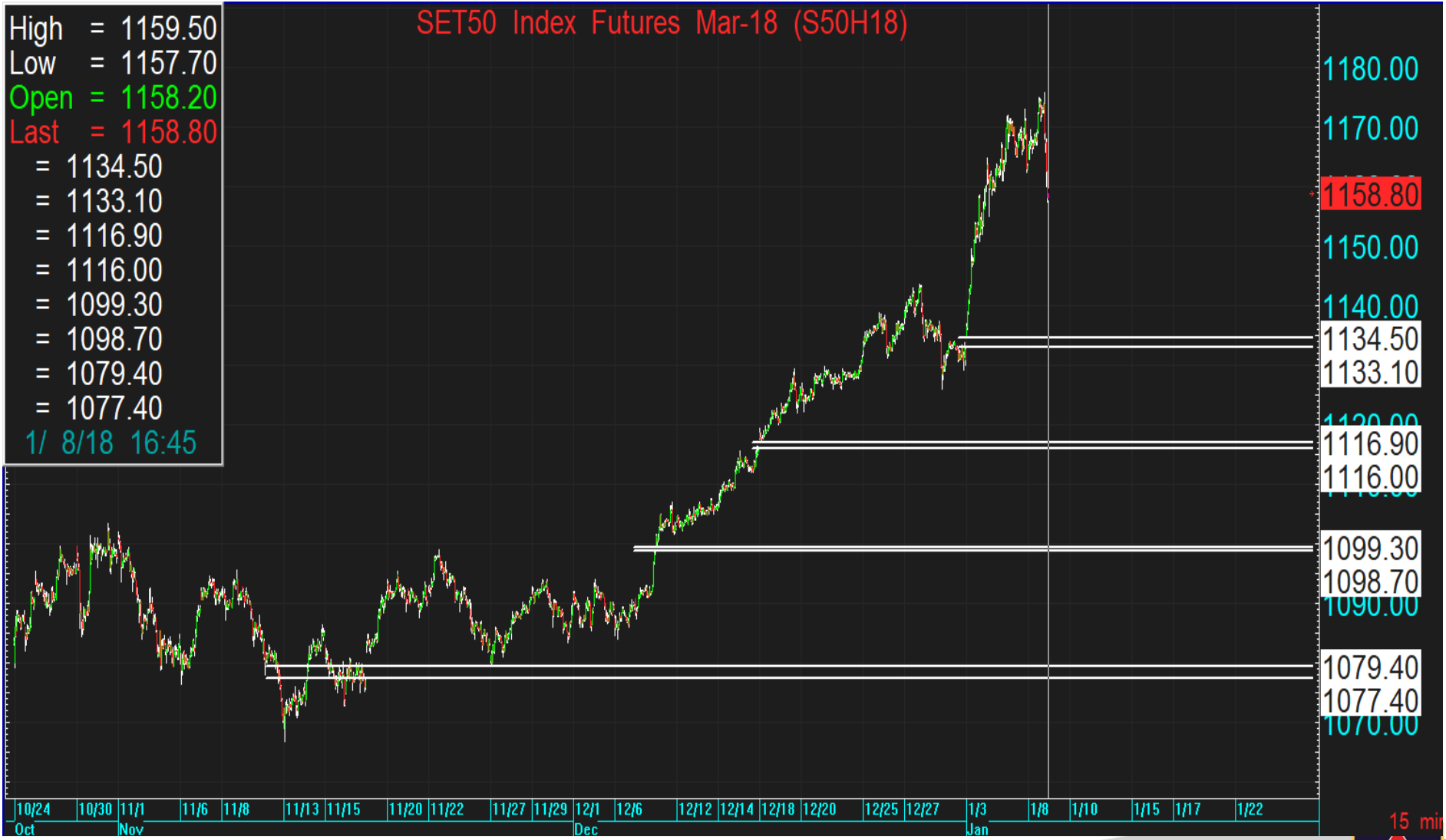
GAP OF SET



GAP OF TFEX

SET50 Index Futures Mar-18 (S50H18)

High = 1159.50
 Low = 1157.70
 Open = 1158.20
 Last = 1158.80
 = 1134.50
 = 1133.10
 = 1116.90
 = 1116.00
 = 1099.30
 = 1098.70
 = 1079.40
 = 1077.40
 1/ 8/18 16:45



PERFORMANCE

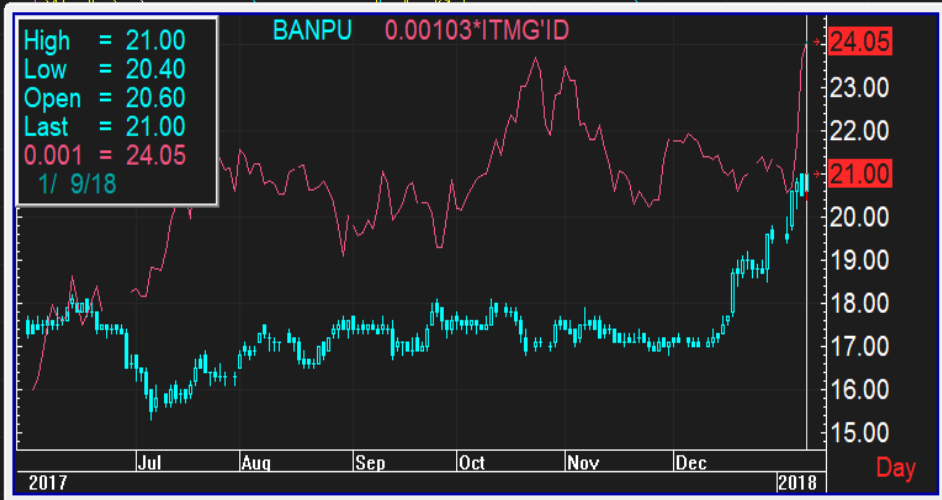


BANPU SL 19.6 r 22-23

BANPU = 0.00090
 BB.Avg 20S = 0.00090
 BB.Top 1S = 0.00103
 BB.Btm 1S = 0.00077
 1/ 9/18

BANPU/ITMG'ID

$\times 10^{-4}$



1.3500
1.3000
1.2500
1.2000
1.1500
1.1000
1.0500
1.0000
0.9500
0.9000
0.8500
0.8000
0.7500
0.7000
0.6500

1.02545
0.89936
0.89558
0.76571

1/2 1/16 2/1 2/13 3/1 3/13 4/3 4/17 5/1 5/15 6/1 6/19 7/3 7/17 8/1 8/14 9/1 9/18 10/2 10/16 11/1 11/13 12/1 12/18
 Dec Jan Feb Mar Apr May Jun Jul Aug Sep Oct Nov Dec Jan Day



INTER-MKT METHOD IMPLY TP OF PTTEP IN BRT TERM AT 114

PTTEP = 1.557
 BB.Avg 20S = 1.531
 BB.Top 1S = 1.681
 BB.Btm 1S = 1.381
 1/ 8/18

PTTEP/BRT

2.3
2.2
2.1
2
1.9
1.8
1.7
1.681
1.6
1.557
1.531
1.4
1.3
1.2
1.1



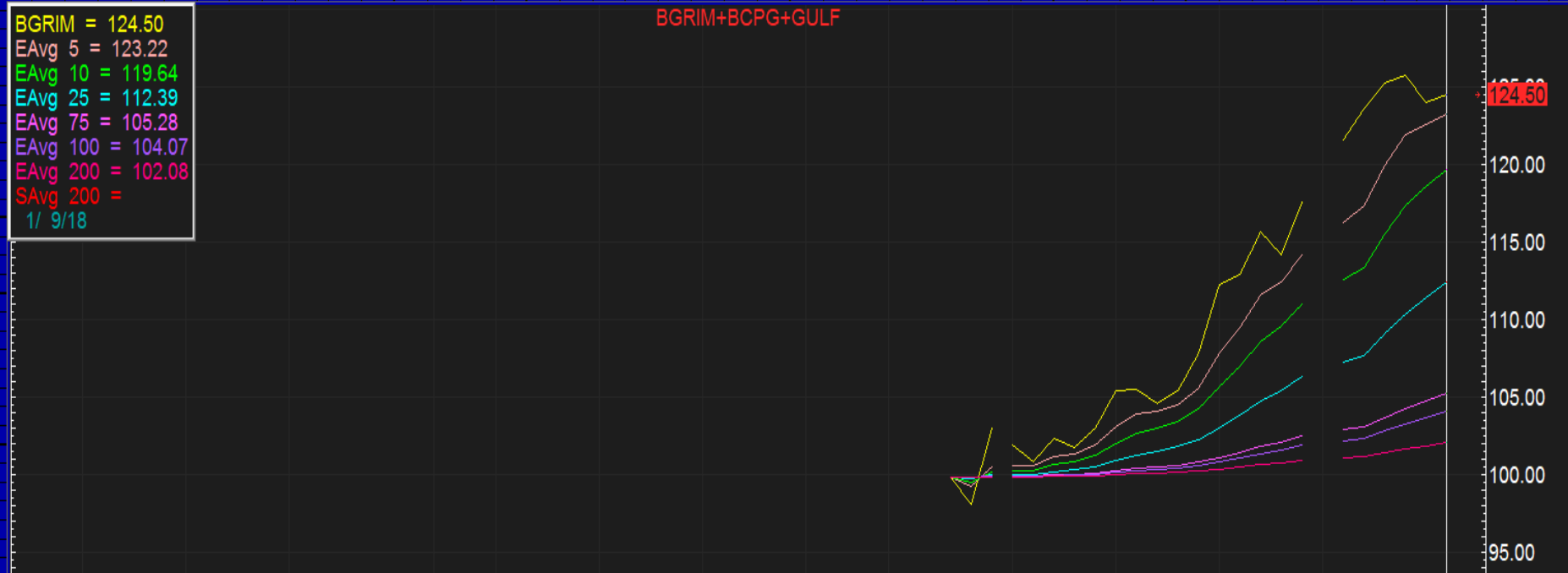
2012 Jan Apr Jul Oct 2013 Jan Apr Jul Oct 2014 Jan Apr Jul Oct 2015 Jan Apr Jul Oct 2016 Jan Apr Jul Oct 2017 Jan Apr Jul Oct

Week

POWER GANG

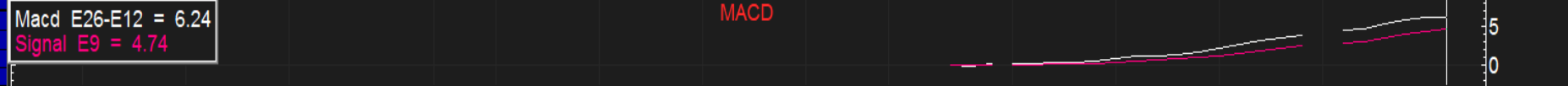
BGRIM = 124.50
 EAvg 5 = 123.22
 EAvg 10 = 119.64
 EAvg 25 = 112.39
 EAvg 75 = 105.28
 EAvg 100 = 104.07
 EAvg 200 = 102.08
 SAvg 200 =
 1/ 9/18

BGRIM+BCPG+GULF



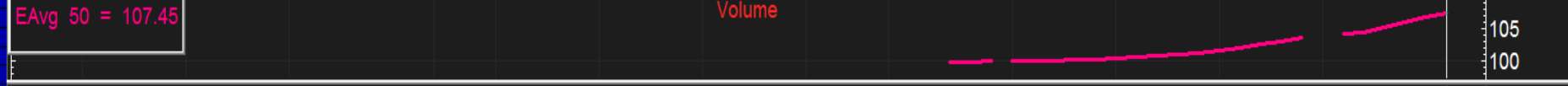
Macd E26-E12 = 6.24
 Signal E9 = 4.74

MACD



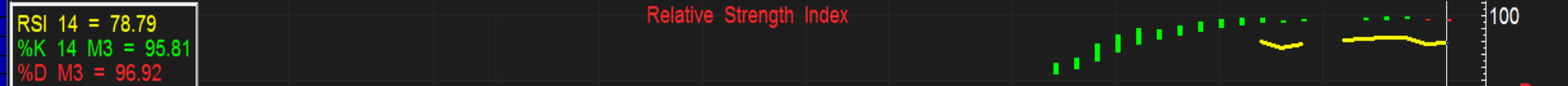
EAvg 50 = 107.45

Volume



RSI 14 = 78.79
 %K 14 M3 = 95.81
 %D M3 = 96.92

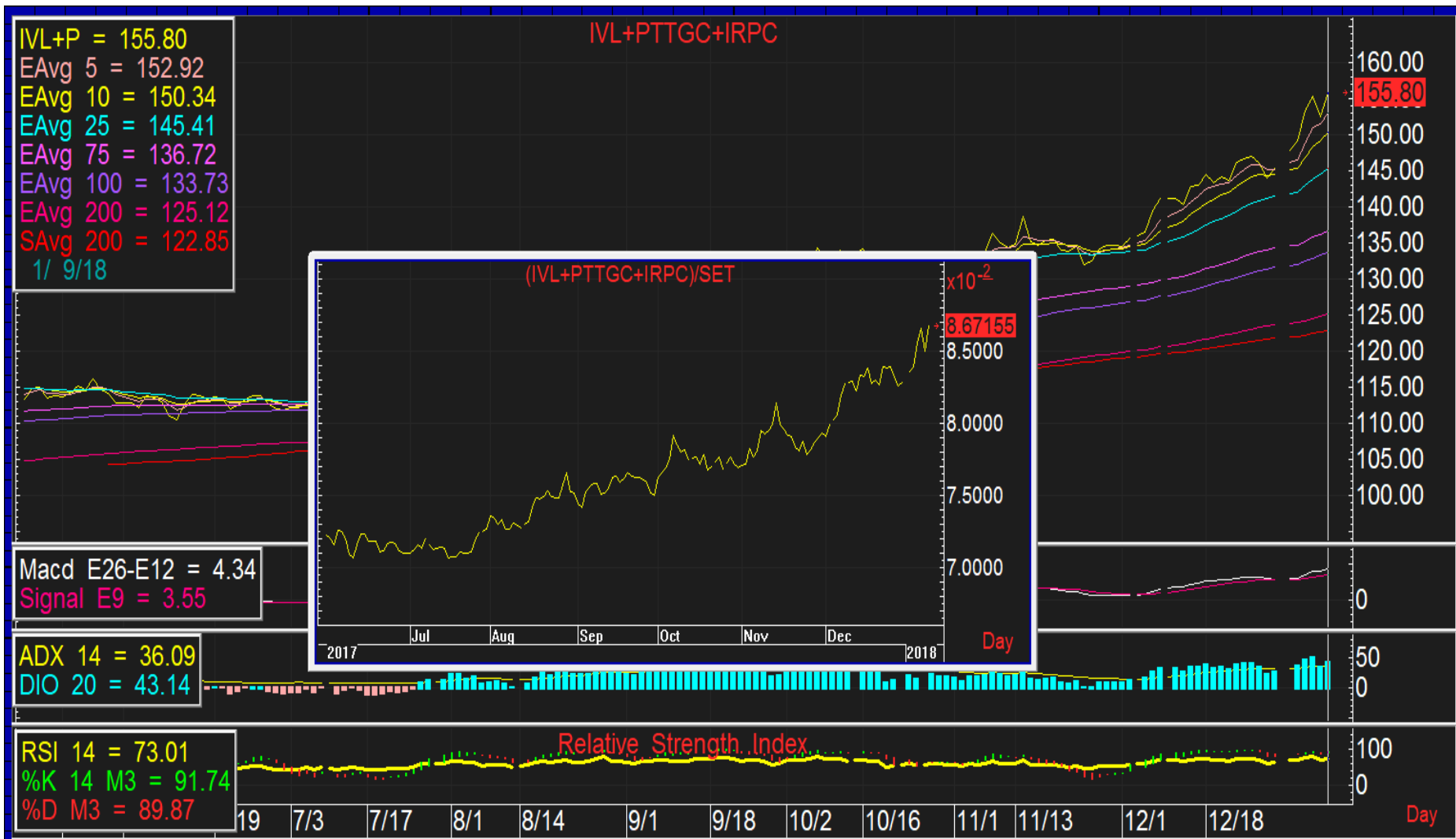
Relative Strength Index



10/9 10/16 10/23 11/1 11/6 11/13 11/20 11/27 12/1 12/11 12/18 12/25 1/1 Day



PETRO GANG



PTG {SL 21.5 r=23.5-24.0}



ATP30{SL 1.67: r=1.81-1.85}



CMO {SL 1.96: r=2.2-2.3}



ROJNA {SL 6.8: r=7.4-7.7}



อภิมหาตบสูตร (ต้องมี STOPLOSS) นะคับ

